

Waste consolidation and recycling are good ideas.

The Friends of Simcoe Forests supports innovation.

but...

Destroying forests we've spent a century reclaiming is NOT a good idea. Friends opposes using any of our forests for industrial projects, particularly when numerous industrial sites are currently available.

Today it's Springwater Township, but next it might be you. If the County take this forest from Springwater, that gives them a precedent to take a forest away from you.

**WHAT FOREST NEAR YOU
DO YOU WANT TO LOSE**

JOIN THE FIGHT!

We need to tell council that forests aren't the place for industrial projects.

- Call your councillor
- Send an email
- Join Friends of Simcoe Forests

Need more information?

Visit our website or Facebook page.

We have contact information for all councillors in Simcoe County, and more ideas for ways you can help protect your forests across Simcoe County.

Facebook: @FriendsofSimcoeForests

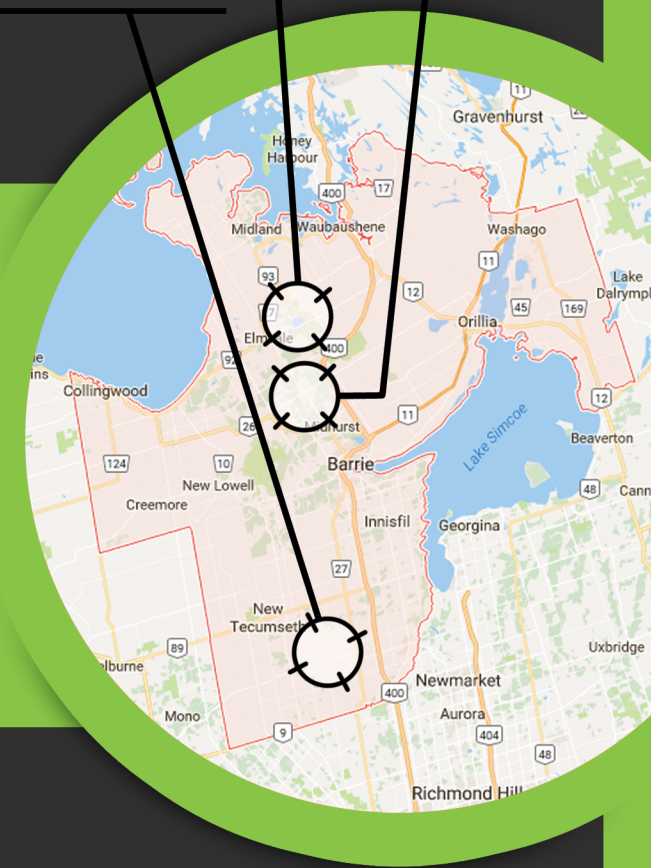
Twitter: @FSF_INC

Website: FriendsOfSimcoeForests.com

Email: info@friendsofsimcoeforests.com



ORR LAKE
BEEETON WOODS
FREELE FOREST



Simcoe County is planning to truck its waste into one of your forests instead of using available industrial land.

They've pursued similar projects in the past. If we don't join together to stop them, what will they put in your community next?

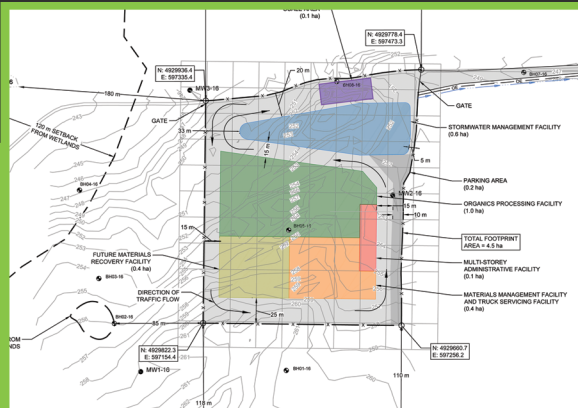
**When you hear NIMBY, think Next
It Might Be You.**

ARE YOU NEXT?

THIS IS THE COUNTY'S PLAN FOR THE FREELE FOREST

They're expecting 220 trucks per day, six days a week, at peak usage. That's at least one truck every two minutes for thirteen hours every day.

This is a forest, not an industrial site!



You know about the Organics Processing Facility (dark green) and the Materials Management Facility (orange).

Did you know about the Materials Recovery Facility (light green)?

In the County Plan they mention the OPF, MMF, and "related support activities". Once you dig into the details, you'll find that includes a MRF, where waste is separated and sorted. They label it "proposed" or "potential" because they know how unpopular it would be to put one in a forest – but federal funding for the MMF "is contingent on the potential expansion of the facility to a full MRF". By not mentioning this part, County hopes to get the OPF and MMF approved now, and make it harder to oppose the MRF when it is eventually announced. These facilities may be useful, but they don't belong in the woods.

WASTE MANAGEMENT SITES ARE A HIGH HAZARD INDUSTRIAL OCCUPANCY BUILDING

An Environmental Resource Recovery Centre is considered a Group F, Division 1 High Hazard Industrial Occupancy building. It is "an industrial occupancy containing sufficient quantities of highly combustible and flammable or explosive materials to constitute a special fire hazard because of their inherent characteristics". This is the highest level of hazard indicated in the Ontario Building Code Act.

These are industrial sites, prepared to deal with fires and heavy truck traffic. Placing a high hazard facility known for fires in the middle of the woods is unimaginably poor planning. Composting organic waste alone can combust, and that's just one of the three facilities proposed for this site.

These kinds of facilities are notorious for fires. Recent examples include:

- An October 27 fire at the Wasteco Plant in Hamilton, which had another fire in April and six fires in eight years
- A fire at a waste recycling facility in Cambridge in October 2015 caused millions of dollars in damage
- A massive fire at an Ajax garbage waste disposal building late last year
- Three recycling centers in the United States caught fire on the same day last year – in Seattle, Indiana, and California.
- A "Centre of Excellence" waste facility in Edmonton caught fire last August, prompting an air quality advisory

...and three years ago six fire departments were called to fight a blaze at the BFI recycling plant in Springwater Township.



WHAT WILL HAPPEN WHEN THEY PLACE A FIRE HAZARD IN THE WOODS?

THE COUNTY DOESN'T CARE WHERE YOU LIVE



The Federal government recommends a 1000m buffer between these kinds of facilities and local homes. When this project was first proposed, the county spoke of a 500m buffer. Recent plans show they've moved this facility as close as 388m from local homes.

In much larger, more densely packed municipalities like Toronto, Kingston, and Guelph, they have been able to keep these facilities 600m, 700m, even 800m away from homes. But in a sparsely populated area of Simcoe County, they're putting it on the doorstep of a dozen homes. They made no effort to find an industrial site away from residential areas, and they'll do the same when they want to put a project in your neighbourhood.

Whether it's a landfill, a waste facility, or clear cutting of an inconvenient forest, the County has shown it is prepared to put what it wants, where it wants, one community at a time. This facility may be intended for Springwater, but the land we're fighting for is yours.

WHAT ARE THEY GOING TO TAKE FROM YOU?